



**The St. Augustine Amphitheatre**  
1340C A1A South, St. Augustine, Florida 32080



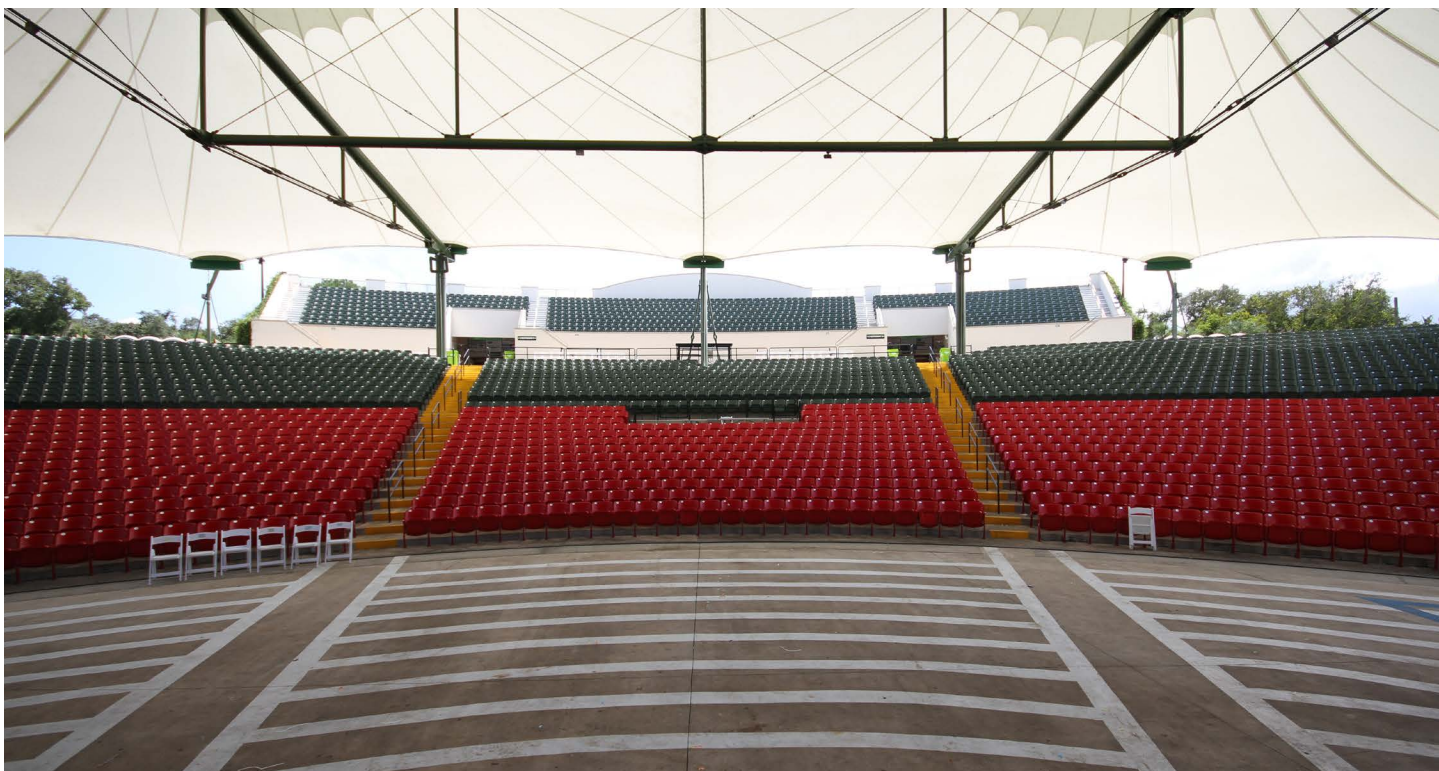
Managed by the St. Johns County Cultural Events Division, the St. Augustine Amphitheatre is a roughly 4,500 seat outdoor amphitheatre located amongst the natural trails of Anastasia State Park. Originally constructed in 1965, the amphitheatre underwent a complete overhaul in 2001 and reopened to the public in 2007.

## Venue Contact Information

Gabriel Pellicer	<i>Interim General Manager</i>	gpellicer@sjcfl.us
Chris Culpepper	<i>Production Manager</i>	cculpepper@sjcfl.us
Tara Ferreira	<i>Hospitality</i>	tferreira@sjcfl.us
Elizabeth Glasgow	<i>Business Manager</i>	eglasgow@sjcfl.us
Diana Markovits	<i>Marketing Manager</i>	dmarkovits@sjcfl.us
Tiffany Stephens	<i>Box Office</i>	tstephens@sjcfl.us
Chris Kelly	<i>Security Director</i>	ckelly@sjcfl.us







## Stage

Venue Type	Open Air Amphitheatre
Stage Material	Concrete
Stage Dimensions	60' wide x 42' deep
Wing Stage Left	15' wide x 30' deep
Wing Stage Right	18' wide x 30' deep
Stage Height	3'8"
Stage Roof	85' wide x 80' deep (permanent)

## Soft Goods

One (1) Upstage black traveler @ 60' x 29'

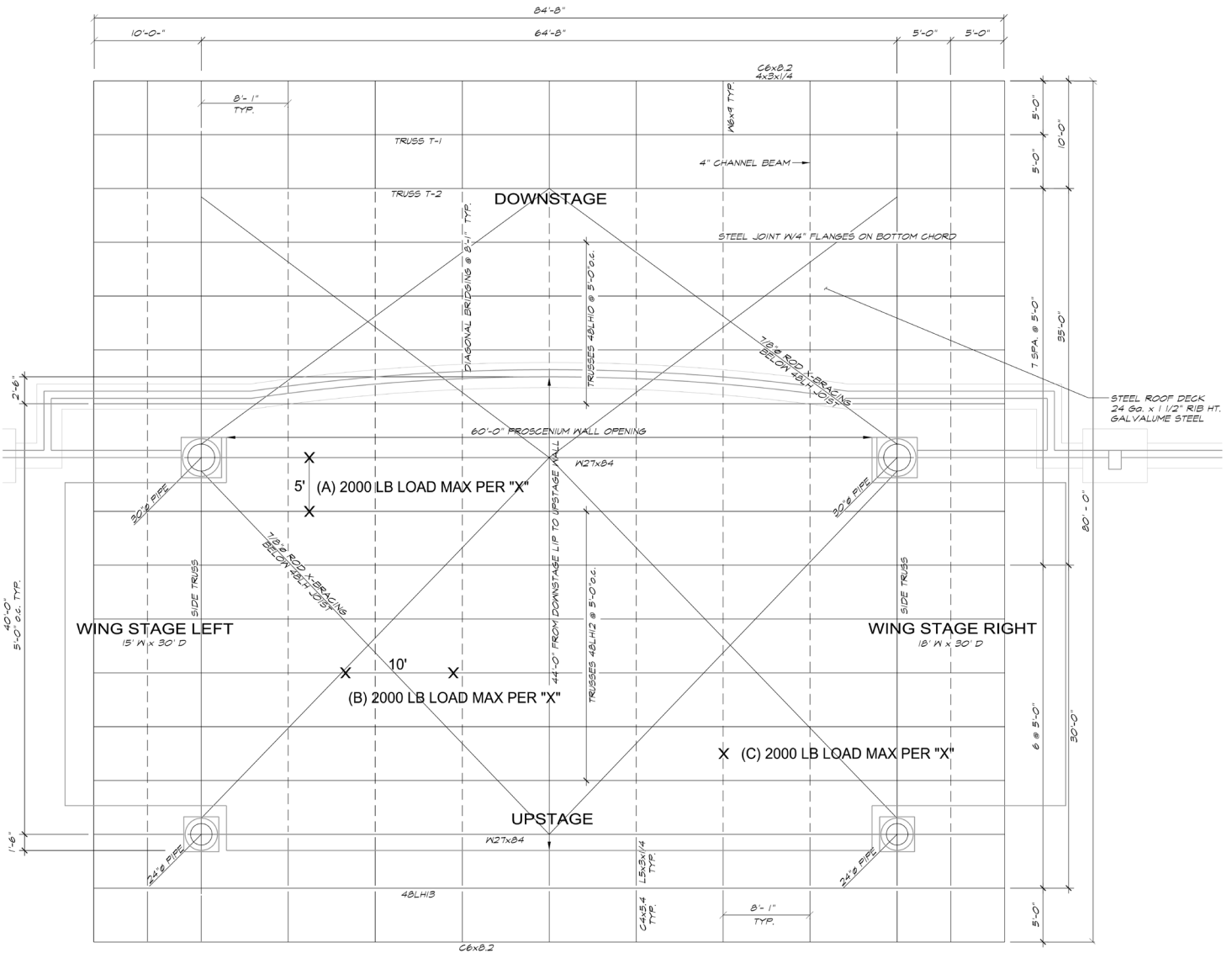
## Power

One (1) 600 Amp 3-phase, 5-wire lug, upstage right  
 One (1) 200 Amp 3-phase, 5-wire Cam-lock, upstage right One  
 (1) 400 Amp 3-phase, 5-wire Cam-lock OR lug, upstage left  
 Two (2) 60 Amp services for shore power  
 Seven (7) 50 Amp services for shore power

## FOH Mix Position

Dimensions	26' 9" wide x 9' deep
Location	90' from downstage center Section 102, Rows L,M,N, Seats 113-126
Cable Run to FOH	175' via SL / SR

## Stage Ceiling and Live Load Diagram



## Rigging

## WEIGHT CAPACITIES

Live Load                      60,000 lbs

Point Load                      2,000 lbs max

HEIGHT TO LOW STEEL

Upstage 29'10"

Downstage 31'3"

## HEIGHT TO HIGH STEEL

Upstage 34'

Downstage 35'6"



[Download Stage Ceiling & Live Load DWG](#)

[Download Stage Ceiling & Live Load DXF](#)

## Available Equipment

JLG 340AJ Articulating Boom Lift - All Terrain  
Warehouse Forklift 5,000lb - Propane  
Toyota Electric Forklift Truck 2,400lb - Stacker  
Lycian 1.2K Super Star Spotlights (4 available - rental fee applies)

*Rolling Risers:* Two (1) @ 8' x 8' x 1'  
One (1) @ 8' x 8' x 2'  
*Fixed Risers:* One (1) @ 8' x 8' x 2'

## Dressing Rooms

There are a total of four (4) dressing rooms located in the hallway immediately behind the stage.

*Dressing Room 1* Large Choral Style w/ 4 toilet stalls and 1 shower  
*Dressing Room 2* Central Green Room w/ 1 private adjoining room with toilet and shower  
*Dressing Room 3* Small Room w/ 1 toilet stalls and 1 shower  
*Dressing Room 4* Large Choral Style w/ 4 toilet stalls and 1 shower

## Telephone & Internet Access

WIFI	Throughout Backstage	(904) 209-0389
Phone Lines	Tour Production	(904) 209-0391

Wired Internet	Tour Production
	Dressing Rooms 1, 3, 4

## Venue Curfew & Policies

Out of respect for the surrounding residential neighborhoods, sound levels must not exceed 102dB SPL A-weighted as measured from the FOH mix position. Venue representatives will regularly measure and monitor volume levels using the house sound meter. While occasional instantaneous peaks may be tolerated, multiple violations (more than five (5) spikes within a two (2) minute window) will result in a \$500.00 fine for each violation within a 15 minute period. Please be advised that formal complaints from residents will result in the St. Augustine Police Department sending their own officers to measure and enforce the city's noise ordinance!

A strict 10:30pm curfew applies to all weekend (Friday and Saturday) shows  
Weekday shows (Sunday thru Thursday) must finish by 10:00pm.  
Fines begin accruing 5 minutes after curfew in the amount of \$1,500.00 for every 5 min over!

Smoking is not allowed backstage or in dressing rooms. Violations will result in a \$250.00 fine.

*All shows are rain or shine events.*

## Backstage Access & Loading Dock

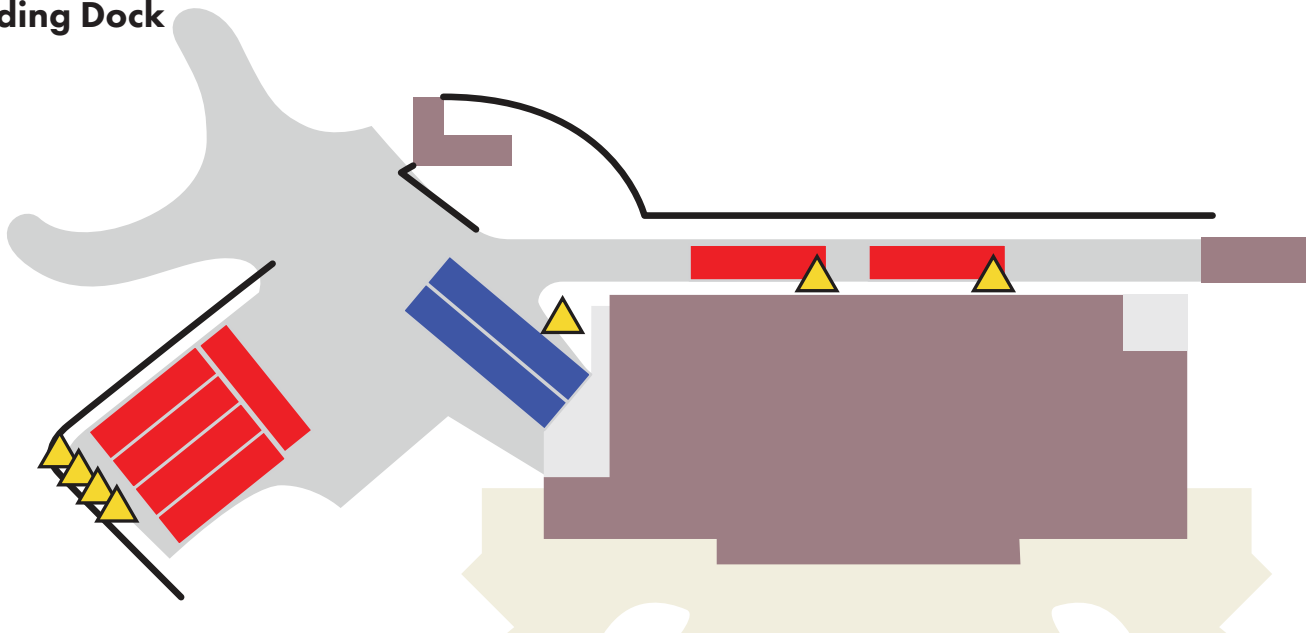
1320 A1A South, St. Augustine, FL 32080

The service road leading to backstage is located approximately 500' north of the main entrance on state road A1A. The service road is accessible to trailers up to 53' in length. Due to space limitations, semi's need to come in first, turn around and be staged before buses come in. The loading dock is equipped with two (2) Autodok adjustable loading ramps, but can accommodate up to three (3) trucks simultaneously. The dock is at stage level with a 40' straight push onto stage right. The bay door is 10.5' tall by 8' wide.

## Bus Parking & Shore Power

Two (2) buses (or additional trucks) can park in the alley immediately behind the main stage building, and four (4) buses can comfortably fit within the parking area just to the west of the loading dock. Shore power is available in both locations.

## Loading Dock



The **RED** rectangles indicate a parking spot typically used for a bus.

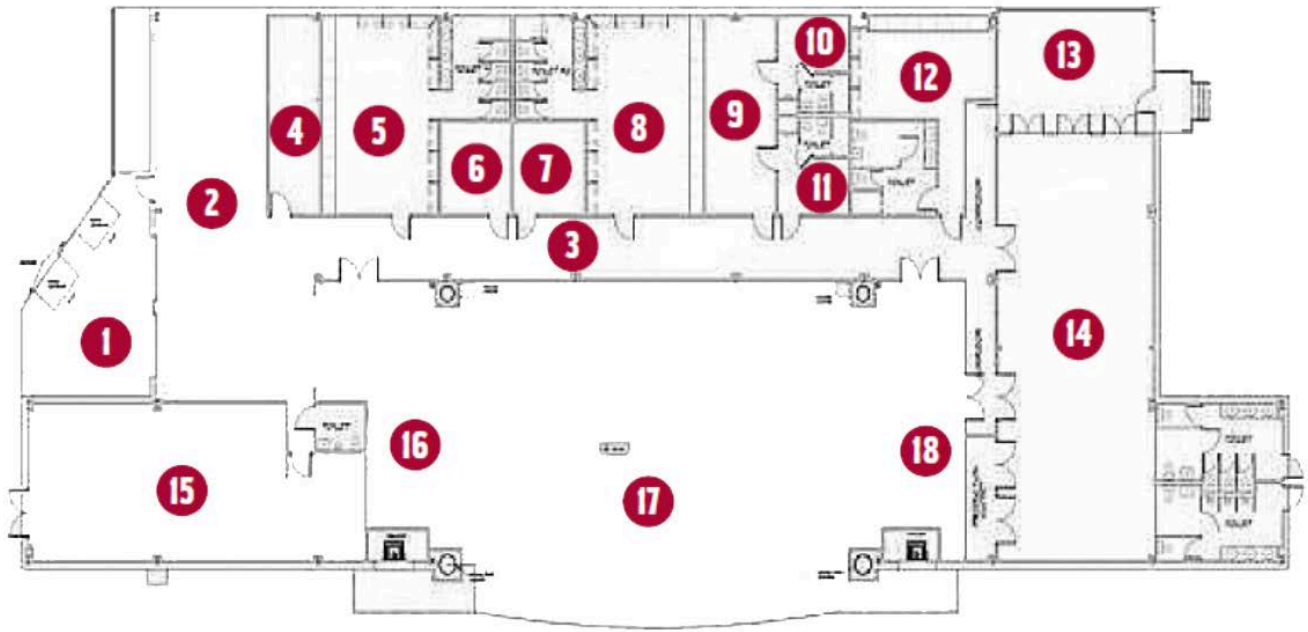
The **BLUE** rectangles indicate a parking spot typically used for a tractor trailer at our loading dock.

Every **YELLOW** triangle represents an outlet for shore power.

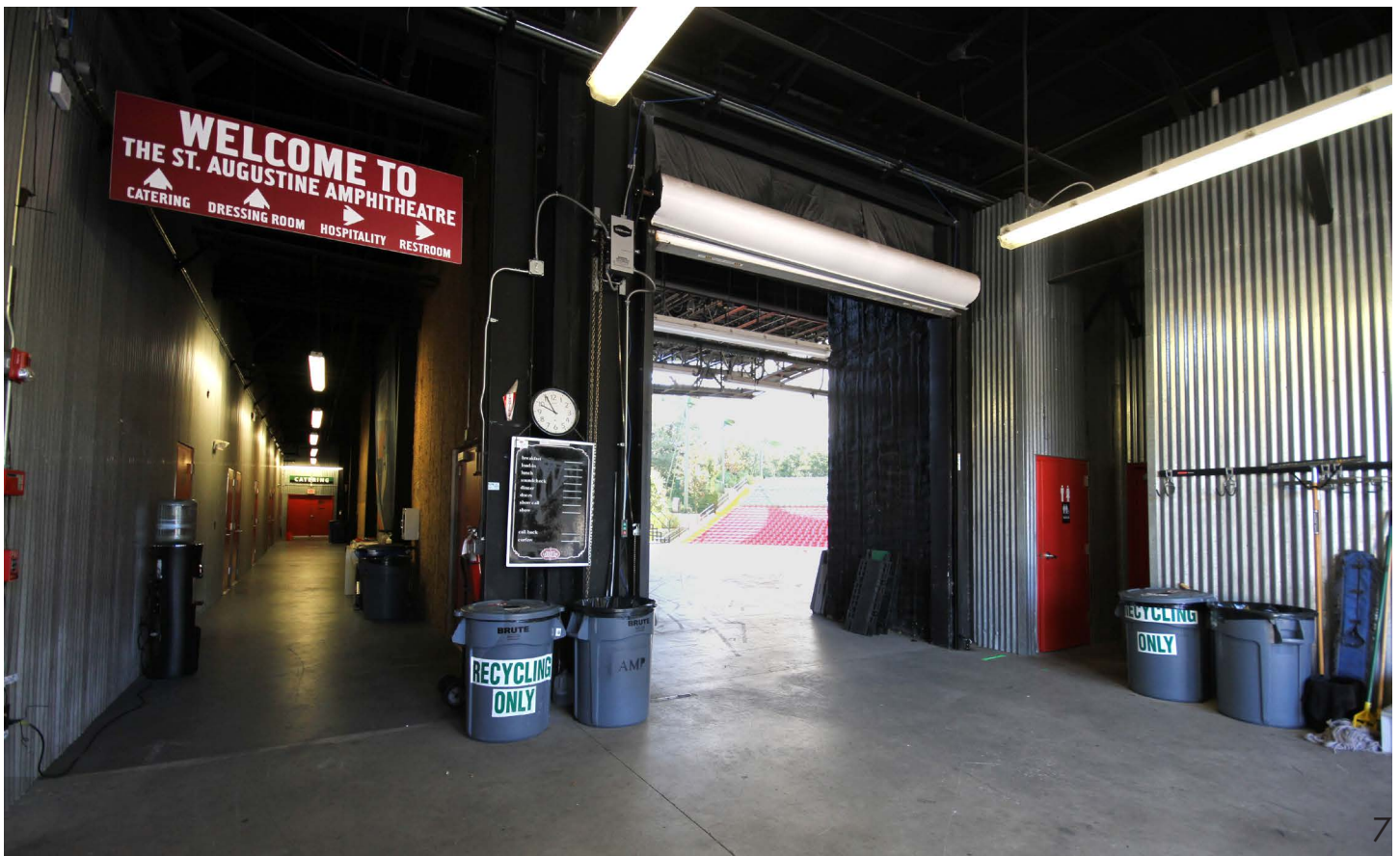




## Navigating Backstage



- |                     |                        |                   |
|---------------------|------------------------|-------------------|
| 1. Loading Dock     | 7. Operations/Promoter | 13. Covered Porch |
| 2. Storage Area     | 8. Dressing Room 1     | 14. Catering      |
| 3. Backstage Hall   | 9. Dressing Room 2     | 15. Kitchen       |
| 4. Electrical Room  | 10. Dressing Room 2B   | 16. Stage Right   |
| 5. Tour Production  | 11. Dressing Room 3    | 17. Stage         |
| 6. House Production | 12. Dressing Room 4    | 18. Stage Left    |



## Capacities

Total Number of Seats: 4595 (including fully obstructed seats)

### Seated Pit

- Pit: 621 (Includes 20 ADA seats)
- 100's: 1017
- 200's: 1338
- 300's: 757 (breakdown: 249 obstructed) (Includes 14 ADA seats)
- 300's Bleacher Seats 600

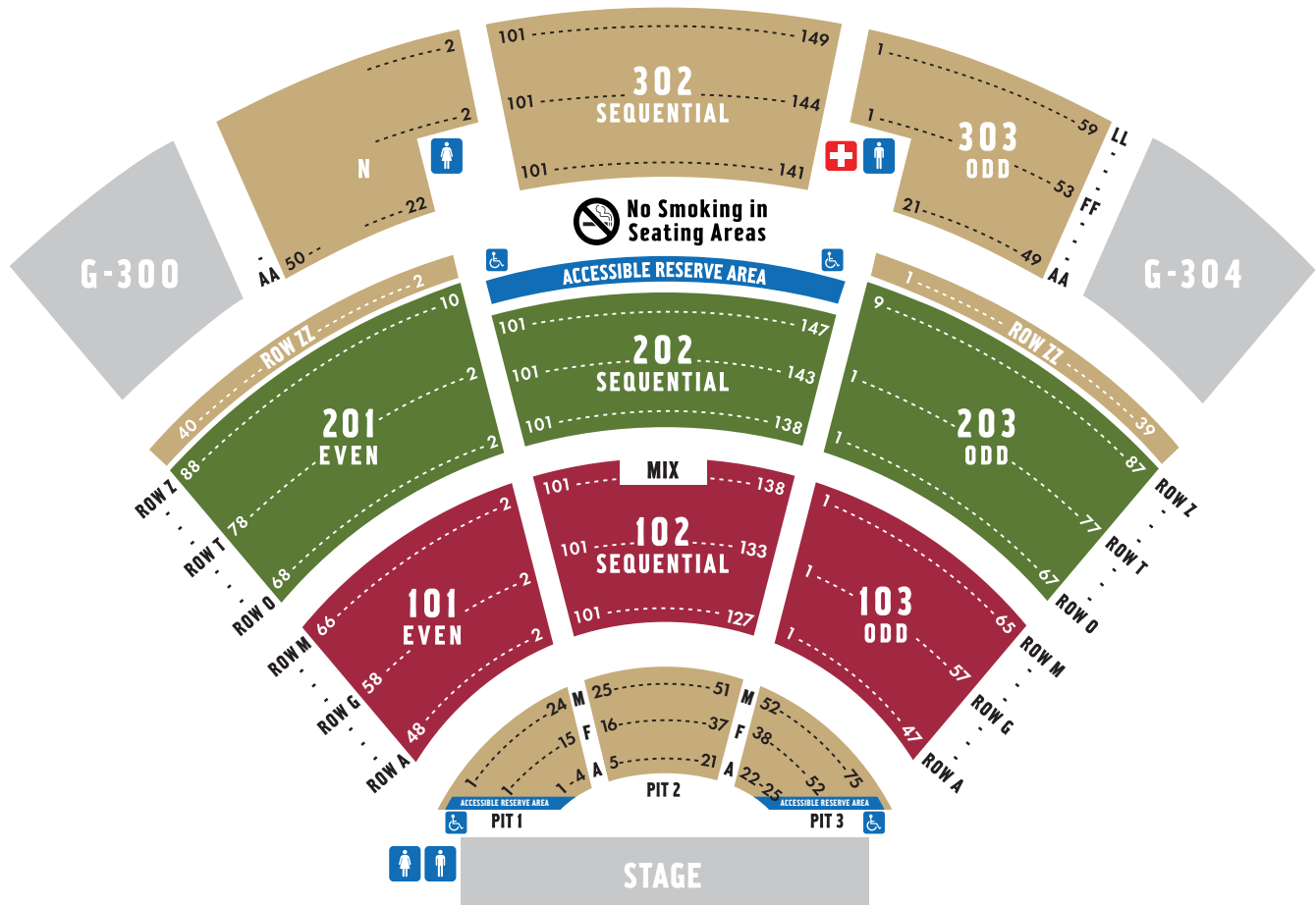
### Total number of seats:

- 4,346 (excluding obstructed)
- 4,595 (including obstructed)

### Standing Pit

- Pit: 634 (20 wheel chair seats in pit)
- 100's: 1017
- 200's: 1338
- 300's: 757 (759 Regular seats, 249 obstructed) (includes 14 ADA seats)
- 300's Bleacher Seats 600

## VENUE SEATING CHART





## Directions

The St. Augustine Amphitheatre is located on Anastasia Island in St. Augustine, Florida. The main entrance and box office are located at 1340C A1A South, St. Augustine, FL, 32080. For Semi's and Buses, use the service road at 1320 A1A South, St. Augustine, FL, 32080 (500' north of the marquee/main entrance on A1A).

### Traveling North:

Take I-95 North to Exit 311 SR 207 North towards St. Augustine.  
Make a right onto SR 207 North and continue for 3.7 miles.  
Make a right onto SR 312 East towards St. Augustine Beach and continue for 3.6 miles.  
Make a left onto A1A North and continue for 1.1 miles.  
The St. Augustine Amphitheatre will be on your right.

### Traveling South:

Take I-95 South to Exit 311 SR 207 North towards St. Augustine.  
Make a left onto SR 207 North and continue for 3.7 miles.  
Make a right onto SR 312 East towards St. Augustine Beach and continue for 3.6 miles.  
Make a left onto A1A North and continue for 1.1 miles.  
The St. Augustine Amphitheatre will be on your right.

**\*Please Note: This is the easiest path for semi's/buses. Other GPS routes will take you through downtown, a draw bridge, much smaller streets, and traffic.**

